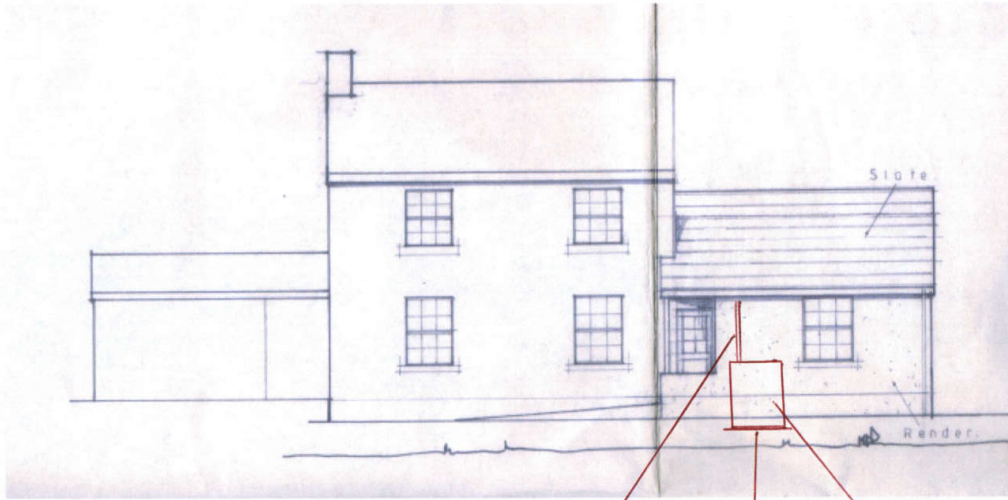


4 Station Cottages, Huttons Ambo  
East Elevation

THIS COPY HAS BEEN MADE BY OR WITH THE AUTHORITY OF RYEDALE DISTRICT COUNCIL PURSUANT TO SECTION 41 OF THE COPYRIGHT, DESIGNS AND PATENTS ACT 1988. UNLESS THAT ACT PROVIDES OTHERWISE EXCEPT TO COPYRIGHT, THIS COPY MUST NOT BE COPIED WITHOUT THE PRIOR PERMISSION OF THE COPYRIGHT OWNER.



Flow and return to heat exchanger module housed in loft

Proposed site of ASHP

New concrete hard standing and soakaway for condensate drain

1:100

S | 00692 | Huse

RYEDALE DM  
14 APR 2015  
DEVELOPMENT  
MANAGEMENT